

ARC LENGTH SYSTEM | PLASMA AND TIG



ALS2000-P - PLASMA
ALS2000-T - TIG

The ALS unit is used in combination with TIG welding and Plasma cutting power sources to give automatic control of the arc voltage to maintain arc length.

The ALS monitors the arc voltage by comparing it with the level set on the ALS2000-P (Plasma) or ALS2000-T (Tig) front control panel and makes changes to the welding torch position as necessary. Once the torch height has been selected it will be maintained despite any changes in the height of the work piece.

The Arc Length System can be used for DC or AC welding using TIG or Plasma cutting processes and is manufactured to be extremely durable. The linear slide is robust needing no maintenance or lubrication and is completely dust and dirt resistant.

MAINTAIN CONSISTENT WELDING AND CUTTING QUALITY
 ARC VOLTAGE DETECTION AUTOMATICALLY MAINTAINS TORCH POSITION

GULLCO

WELDING AND CUTTING



FEATURES:

Precision control of welding torch positioning using the control box adjustments

LED Digital Readout of preset parameters

Arc Length Control Timer: Start delay can be set between 0 - 10 Seconds

Precision control of the sensitivity and actuator speed of the corrective changes made to the arc length

Control shows when welding current is flowing and start delay time has elapsed

Control Box can be mounted on an Idler Carriage or stands freely on its own

SPECIFICATIONS:

Supply Voltage: 110V or 230V: 50Hz (110V 2Amps or 230V 1Amps)

Welding Current Range: 20-500A (available in greater ranges upon request)

Welding Voltage Range: 5-50V or 50-350V for plasma (available in greater ranges upon request)

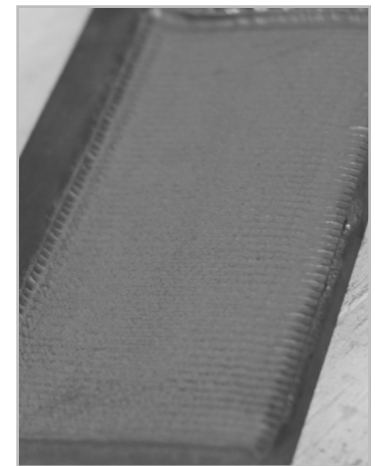
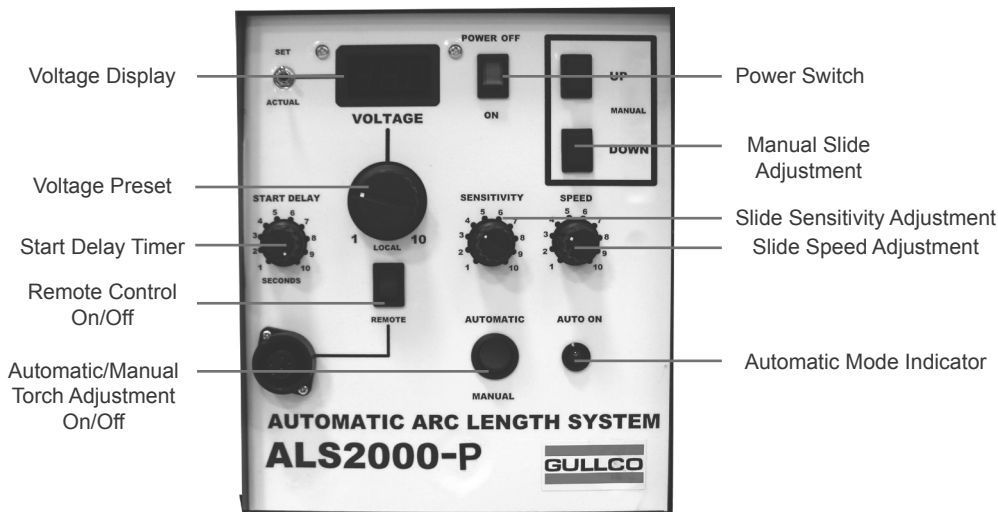
Voltage Accuracy: +/- 0.5V

Degree of Protection: IP21

Linear Slide Range: 4"

Linear Slide Speed: 6"/min (15.2cm/min)

Linear Slide Max Load: 12lb



Results shown produced with optional linear oscillator.

GULLCO, KAT, KBM, MOGGY, KATBAK & SAM are registered trademarks of Gullco Enterprises Limited

SPECIFICATIONS ARE SUBJECT TO CHANGE WITHOUT NOTICE. ALL DIMENSIONS ARE NORMAL

Distributed by:

GULLCO

GULLCO INTERNATIONAL LIMITED - CANADA
Phone: 905-953-4140 Fax: 905-953-4138 e-mail: sales@gullco.com

GULLCO INTERNATIONAL INC. - U.S.A
Phone: 440-439-8333 Fax: 440-439-3634 e-mail: ussales@gullco.com

GULLCO INTERNATIONAL (U.K.) LIMITED- EUROPE
Phone: +44 1257-253579 Fax: +44 1257-254629 e-mail: sales@gullco.co.uk

GULLCO INTERNATIONAL PTY LIMITED - AUSTRALIA
Phone: 61 (0)7 3348 5515 Fax: 61 (0)7 3348 5510 e-mail: ausales@gullco.com

GULLCO INTERNATIONAL INDIA PVT LIMITED - INDIA
Phone: 91-20-65260382 Fax: 91-20-26836656 e-mail: india.io@gullco.com

GULLCO INTERNATIONAL SHANGHAI LIMITED- CHINA
Phone: +8621-50460341 Fax: +8621-50463554 e-mail: gsuntech@sh163.net

GULLCO INTERNATIONAL LIMITED- LATIN AMERICA
Phone: 55-11-9485-1336 e-mail: rogerio.macedo@gullco.com

STUCH GMBH & Co. KG SCHWEISSTECHNIK - GERMANY
Phone: (02 03) 72 94 95 Fax: (02 03) 72 94 96 e-mail: info@stuch-schweisstechnik.de